



ASHRAE San Diego Newsletter



REGION X
www.ashraesd.org
Volume 5, Issue 7

September 2013

INSIDE THIS ISSUE

1	President's Message
	September ASHRAE Meeting - Energy
2	Efficient Solutions for Commercial Kitchen Ventilation
2	Save the date: 2013/14 ASHRAE Events!
3	ASHRAE San Diego Foundation Seeks Board of Directors Nominations
3	ASHRAE Community Outreach At Hedenkamp Elementary School Garden
4	4-mile fundraising walk! Making Strides Against Breast Cancer!
4	Upgrade Your ASHRAE Status from "Associate" to "Member"!
5	ACE Mentorship Program
6	Another Great ASHRAE Region X CRC
9	ASHRAE San Diego Members Page!
10	Do you know your Officers and Chairs?
	The YEA Page!
11	YEA Padre Game - Save the date!
13	New Faces of Engineering
14	ASHRAE San Diego Poker Night

President's Message

Welcome to the 2013-2014 ASHRAE San Diego year! It is going to be amazing! We have a great group of volunteers ready and eager to make this year extraordinary.

I have a passion for this industry that I know many of you share. We cannot walk into a room without looking up at the ceiling or over to the next roof and muttering "why did they do that?", "that unit needs replacing", "that must have been a VE", etc. My friends joke that I can't have a conversation without bringing up HVAC or ASHRAE. Luckily most of these friends don't judge me for it, since they share my enthusiasm on the topic.

I look at all of the wonderful opportunities to grow and learn that ASHRAE has provided me over the last 7 years (I joined within a year of graduating college), and I look forward to giving back to the organization and community. My goal for this year is to get more people involved and to grow our membership by providing more social events, volunteer opportunities, family events, mentoring for new members, and additional educational opportunities. Some new things to look forward to:

- Brewery Tour
- Habitat for Humanity Project
- Community Outreach Events
- Family Event/BBQ
- New Group Learning Course
- New ALI Course
- ACE Mentoring
- And More!

Don't worry though we will still be doing our "fan" favorites, such as the Annual Holiday Party, YEA events and Golf Tournament. Hugh Egan, your President-Elect, has also scheduled some informative monthly meetings/programs (typically the 2nd Tuesday of every month). We have not removed any of the value you have come to expect from our chapter, we have added value!

I can't wait to see everyone at our upcoming ASHRAE events!
Thank you,



Heather Schopplein, PE
ASHRAE San Diego President 2013-2014

September ASHRAE Meeting - Energy Efficient Solutions for Commercial Kitchen Ventilation

When: 11:30 am, September 10th, 2013

Where: 94th Aero Squadron, Past Presidents' Meeting
8885 Balboa Ave San Diego, CA 92123

Cost: ASHRAE Member –\$35 (if registered before Sept. 4th)
\$40 (after Sept. 4th)
Non-Member – \$50
Retired/Student – \$20



Restaurants are among the buildings with the highest energy intensity in commercial sector. They contribute over 500 trillion Btu to the U.S. annual energy consumption. Whether you operate food court, cafeteria or a restaurant is part of your facility or you operate a standalone restaurant, this presentation will give practical recommendations how to reduce its energy consumption by up to 50% and improve its indoor environmental quality for better employees' and customers' satisfaction. This presentation will cover new designs as well as recommendations how to improve efficiency of existing commercial kitchens. It will also cover requirements of the latest edition of ASHRAE 90.1 Standard in regards to efficient ventilation design of commercial kitchens. Presentation will be useful for owners, operators, energy and design professionals involved in design, construction and operation of foodservice facilities.

Presented By:

Dr. Andrey Livchak has 29 year international experience in the HVAC industry. He has been working at Halton since 1989 first in Europe and now in the US as the Director of Global R&D for the Foodservice division. He is responsible for planning and coordinating research and development of five Halton Research Centers in America, Europe and Asia. He works on ASHRAE TC 5.3 and 5.10 committees, has over 50 publications including 20 patents.

Save the date: 2013/14 ASHRAE Events!

- 10/08/2013 – Non-Residential Title 24 Changes
Mark Madison, Energy Code Works, Inc.
- 11/13/2013 – AMCA Certification for Fan Array Testing Methods
Larry Hopkins, Director of R&D at Huntair
- 12/12/2013 – ASHRAE Holiday Party! (Date to be confirmed)
- 01/14/2014 – Kathy McGee/Marcus Web
Shire Project SHORE
- 02/11/2014 – Laboratory / Bench Top Ventilation
Robert Hotchkiss with Nederman
- 03/11/2014 – Joint Meeting with Orange Empire Chapter!
- 04/08/2014 – Site visit / Distinguished Lecturer
- 05/13/2014 – Site visit / Distinguished Lecturer
- 06/10/2014 – Installation & Awards Dinner

Interested in becoming more involved with ASHRAE through joining or chairing a Committee or becoming a Chapter Officer?

To find out how, contact one of the existing Chairs or Officers or visit www.ashraesd.org!



**BENDER & DEAN
ENGINEERING**
Consulting Engineers

438 Camino Del Rio South
Suite 217
San Diego, CA 92108-3547

Ph: 619-704-1900
858-427-1690
Fax: 858-427-1608

ASHRAE SAN DIEGO FOUNDATION SEEKS BOARD of DIRECTORS NOMINATIONS

The ASHRAE San Diego Foundation (ASDF) is seeking nominations for the 2014 board of directors. The ASDF manages investments to support the long term chartable goals of the chapter. ASDF board members will meet a minimum of 4 times per year to review and manage the ASDF portfolio. Expert advice and executions are performed by our financial advisor at Edward Jones. This is an excellent opportunity to provide volunteer services to the San Diego community and to learn more about long term financial strategies.

Nominations for the 2014 year are due by Friday, October 25th with voting in December. All nominations can be set to Bill Reagan at bill@QAppliedSystems.com.



SAN DIEGO GREEN BUILDING COUNCIL

ZERO ENERGY ZERO WATER Building Conference

Day 1: September 11

Day 2: September 12

Join us for a two-day conference covering, **Energy & Water**, two of the most critical topics facing our community, our state, and beyond.

During this event we will share best practices and stories from leaders in the industry who are already tackling these issues and implementing solutions in their building designs and projects.

Keynote Speakers

Tom Hootman, **RNL Design**

Lisa Fay Matthiessen, **Integral Group**

Go to <http://www.usgbc-sd.org/>
for more info

ASHRAE Community Outreach At Hedenkamp Elementary School Garden

ASHRAE San Diego is participating in USGBC's Green Apple Event on Saturday, September 28, 2013. The purpose of this outreach event is to volunteer in the beautification of Hedenkamp Elementary School's Garden in Chula Vista. Volunteers jobs will include; laying a garden path, digging holes for plants, moving compost area, etc.

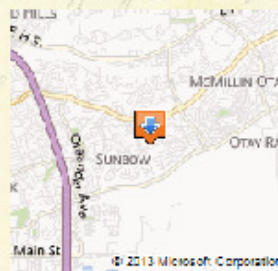
There are no fees, so click below to register or RSVP.

<http://events.r20.constantcontact.com/register/event?oeidk=a07e801dhts90718527&llr=j9aahecab>

If you have any questions please contact Kaitlin Douglass at kaitlin.douglass@siemens.com or Heather Schopplein at hschopplein@gmail.com.

We look forward to seeing you at Hedenkamp Elementary.

* Please dress comfortably and wear ASHRAE or ASHRAE SD clothing if possible



SEPTEMBER 28th
8:00 AM – 1:00 PM

Hedenkamp Elementary School Garden
930 E Palomar Street
Chula Vista, CA 91913

WWW.ASHRAESD.ORG



Making Strides of San Diego



Join ASHRAE for a 4-mile fundraising walk!

Making Strides Against Breast Cancer!

Sunday, October 20, 2013

7:00 AM Registration

8:00 AM Walk Starts

Balboa Park

6th Ave and Laurel Street, San Diego

It is free to walk!

Team: ASHRAE San Diego

<http://main.acsevents.org/goto/ashraesandiego>

Questions? Email Heather at hschopplein@gmail.com

Upgrade Your ASHRAE Status from "Associate" to "Member"!

Erik Sanchez
Johnson Controls
Membership Promotion Chair, 2013-14

Have any co-workers at your office who are not currently members in ASHRAE? Explain to them why you're a member & the benefits you enjoy, and then bring them out as your guest to our next meeting! If they join, both you & your guest will receive lunch on us as part of our Member-Get-A-Member program. Just contact me, Erik Sanchez, at Erik.D.Sanchez@jci.com or come find me at the next meeting.

If you are an industry professional with 8 or more years of "equivalent industry experience," you are eligible to upgrade your membership status from Associate to Member at NO ADDITIONAL COST... Contact me to find out how!

CALIFILTER [Est. 2001]
45390 Camino Monzon
Temecula, CA 92592
951.302.9030

Strategic Partner:
Richard L. Farr@
R&B Filtration
ASHRAE Member
USGBC Member
LEED

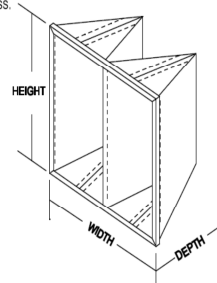
RANDALL PRATT
Air Filtration Sales

eFax: 619.615.2303

eMail:
RandallPratt@CALIFILTER.com

- SPECIFICATIONS**
1. OSA MIST / MOISTURE SEPARATOR
 2. HIGH PERFORMANCE SYNTHETIC MEDIA - ANTIMICROBIAL TREATED
 3. MEDIA IS BONDED TO THE ENTIRE PERIPHERY OF THE HEADER ELIMINATING AIR BYPASS.
 4. MERV 8: ASHRAE 52.2 (LEED)
 5. EFFICIENCY: 30% - ASHRAE 52.1
 6. ARRESTANCE: 90% - ASHRAE 52.1
 7. INITIAL PRESSURE DROP - .20" W.G. (LEED)
 8. UL CLASS 2

- SIZES**
1. NOMINAL FILTER SIZE: 24" x 24" x 12" (MODEL CC242412)
 2. NOMINAL FILTER SIZE: 20" x 24" x 12" (MODEL CC202412)
 3. NOMINAL FILTER SIZE: 12" x 24" x 12" (MODEL CC122412)



CALIFILTER
45390 Camino Monzon
Temecula, CA 92592

CALIFOG
CALIFILTER

OSA AIR FILTER MIST/MOISTURE SEPARATOR
*PLUS MERV 8 EFFICIENCY
Contact Email: randallpratt@califilter.com
Office: 951.302.9030

ACE is looking for Engineers and Contractors to be Mentors! There are 10 High Schools around the County that participate, so no need to go far to find a school to help. Commitment is typically 2 hours every other week. Are you interested?



You're Invited to Register for the ACE Mentor Program 2013-2014 Year

The ACE Mentor San Diego program connects high school students interested in pursuing careers in the fields of **A**rchitecture, **C**onstruction, and **E**ngineering with industry Mentors who share their industry knowledge in the classroom and on local job sites.

We encourage new Mentors to share their expertise with our future workforce, the ACE Mentor San Diego students.

New & Potential Mentors you are invited to register and forward this email to your industry contacts.

<http://acementor.org>



Questions? Email ACESD@sbcglobal.net or
Call 619.222.8155

<http://acementor.org>

For more information please email ACESD@sbcglobal.net.

For an ASHRAE point of view email hschopplein@gmail.com or rspringe@umec.com.



Gather with ASHRAE Region X Chapter Leaders to conduct Society business and share ideas for effective chapter operations.

Chapters Regional Conference □ August 8-10, 2013

Palace Station Hotel and Casino □ Las Vegas, Nevada



Another great CRC...

*Cindy Moreno, T&M Mechanical
YEA Regional Coordinator*

I've been attending ASHRAE Region X CRC's since 2005 and each year I am more and more impressed with the level of participation and professionalism from the young leadership in ASHRAE. As the Young Engineers in ASHRAE Regional Coordinator for our 14 chapters that make up Region X, this is obviously something I hold near and dear; and with the outstanding support of each of our chapters as new members dedicate themselves to ASHRAE and the volunteer work it takes to make a successful chapter, I am reminded of the strong leaders and mentors that we have here in the west – particularly in my home Chapter of San Diego. With the greatest number of representation at the Chapters Regional Conference this year, the San Diego Chapter not only showed enormous support for one another as we cheered on each volunteer who was recognized for their efforts at the awards presentation, but we showed a level of enthusiasm that could not be surpassed (or sometimes quieted ☺). There was no doubt that San Diego was in the house!! Likewise, our chapter leadership presented several successful motions to their peers during the business meeting which showed a thoughtfulness and dedication to the future of ASHRAE and "Shaping the Next".

For the past few years, I have had the honor of hosting the "YEA Activity Night" at CRC and given the volatile setting of Las Vegas (and Caucus meetings the next morning), we had to tame it down a little this year. More than thirty-five Young Engineers in ASHRAE joined us to participate in the Marshmallow Challenge; and attempted to build a freestanding structure using only a few sticks of uncooked spaghetti, some string, tape, and a marshmallow on top. The challenge was fun to watch and hilarious to judge as structures "snapped" at the very last second. In the end, the winner stood only a few mere inches off of the floor, but it was still standing! To celebrate, we headed down to Jack's Irish Pub, mingled, listened to some live tunes. Always a good time with YEA!

I want to thank everyone who represented the San Diego Chapter at CRC – you made us very proud. We have some fantastic leadership in our chapter – those of us who are up and coming in the chapter and those of you who have paved the way and created a solid legacy to carry on. As Regional leadership, we learned that it is never easy to host a meeting and workshops in a venue with so many tempting distractions, but we also recognized the dedication of many and are grateful to have you as a pivotal part of the Region X team.

Congratulations on the MANY awards brought home by our chapter for the outstanding service of our 2012-2013 volunteers and Cheers to a wonderful 2013-2014 ASHRAE year to come!





Gather with ASHRAE Region X Chapter Leaders to conduct Society business and share ideas for effective chapter operations.

Chapters Regional Conference □ August 8-10, 2013

Palace Station Hotel and Casino □ Las Vegas, Nevada



**Congratulations to all of our
CRC Award winners from
2012-2013!!**

Especially...

Heather Schopplein, for her 2013-2013 Chapter Programs STAR Award,

Tiffany Bates, for her Regional Award of Merit,

and **Rebecca Haehn**, our outgoing President for cleaning up with awards for the San Diego Chapter!



Gather with ASHRAE Region X Chapter Leaders to conduct Society business and share ideas for effective chapter operations.

Chapters Regional Conference □ August 8-10, 2013

Palace Station Hotel and Casino □ Las Vegas, Nevada



**CRC: A weekend of work...
but with time to play!**



Our ASHRAE San Diego Members Page!

This is our page to recognize and acknowledge the events and accomplishments in the lives of our ASHRAE San Diego Chapter members.

We're always looking for an excuse to celebrate each other and give a pat on the back. If you'd like to recognize someone in the ASHRAE Community, let us know! Contact me at cferraro@randallamb.com.



<http://www.ashraesd.org/.html>

Happy September Birthday!

Andrew Nash
Benjamin Fieck
Brian Bloker
Cameron Peck
David Shreve
Dee Davis
Dennis Christie
Dennis Shea
Jose Pecchio
Joseph Mucher
Kenneth Pearson
Paul Hausbeck
Ralph Remsburg
Ramak Rahnemoun
Richard Des Lauriers
Richard Klein
Robert Caldwell
Terry Erickson
Thomas Wolfe
Tiffany Bates
William Flores
Yared Gutierrez

Welcome New ASHRAE Members

Sonya Spala & Antonio Corradini

Letter from the Editor

Calina Ferraro
Randall Lamb

Contribute to the newsletter a promote your company for free...

When you send in a contribution to the newsletter, we'll post your company's business card sized ad for free. You can write an article on HVAC related news, share photos from ASHRAE events, or write a recap of a meeting...If you would like to contribute, please email your submission by the 24th of the month. Email any questions/comments to cferraro@randallamb.com.

Or you can advertise as follows:

Business Card 6 Issues; \$80
Business Card 12 Issues; \$140
Half Page (4.9" tall x7.25" wide) Ad 1 Issue; \$50
Half Page (4.9" tall x7.25" wide) Ad 3 Issues; \$125
Full Page (9.8" tall x7.25" wide) Ad 1 Issue; \$100
Full Page (9.8" tall x 7.25" wide) Ad 3 Issues; \$250

Submissions: Due by 24th of the month for inclusion in the newsletter issued on the 1st. Email submissions to: cferraro@randallamb.com please include "ASHRAE SD Newsletter Ad" in the subject line.

MEP Engineering · Clean Energy · Building Sciences



CONSULTING ENGINEERS
RANDALL LAMB

Supporting ASHRAE and the REGION X - SAN DIEGO CHAPTER

www.RandallLamb.com



MECHANICAL SALES CO.

215 S. Hwy 101, Ste. 107, Solana Beach, CA 92075
Tel: 858.481.6176 Fax: 858.259.7796
sales@tmmechanical.com
www.tmmechanical.com

Specializing in:

- Boiler, Engine & Water Heater Exhaust Flues
- Fan Coil Units
- Computer Room A/C Units
- Fin Tube Radiation Units & Convectors
- Flow Control Valves

Do you know your Officers and Chairs?

Here are some fun facts you should know!



Hugh Egan

Position: President-Elect/Programs

Company: Climatec

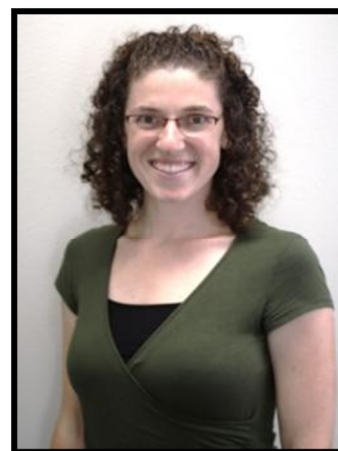
1. Favorite ASHRAE memory is his 1st Holiday Party at Tom Ham's
2. Played rugby in high school and college (and still loves watching it)
3. Wanted to be an engineer "when he grew up", but was disappointed when he got to college and there were no trains.
4. Loves the beach. It must be why his favorite vacation is Honduras, and why he wants to go to Cabo on his next vacation.
5. Favorite action hero is Iron Man.

Calina Ferraro

Position: Newsletter Editor

Company: Randall Lamb

1. Originally from Nova Scotia, Canada
2. Loves to watch baseball! Especially her Toronto Blue Jays!
3. One of the things on her bucket list is to learn French, which will help next time she visits Paris (her favorite vacation so far).
4. Would fit in well in Ireland since her favorite beer is Guinness and she loves cheese.
5. Favorite Joke: "Two kittens on a roof, which one slides off first?"
-The one with the lowest mew"



Jennifer Felsburg

Position: Board of Governor's (Past President of Sacramento chapter)

Company: Trane

1. Favorite Non-Profit (other than ASHRAE) is Active 20 30 a Children's Organization (<http://www.active20-30.com/>)
2. College Football is her favorite sport to watch (Go Purdue Boilermakers!)
3. Was an Indianapolis 500 Princess
4. Favorite TV Show is Southpark
5. One of her favorite restaurants is Sally's in Seaport Village, where you may find her sipping on her favorite drink (grape vodka with sprite zero)

**Join the Conversation on ASHRAE'S
new online forum**



<https://www.ashraexchange.org>

San Diego Sales Office



Commercial Systems/Southern California
3565 Corporate Court
San Diego, CA 92123
Office (858) 576-2500
Fax (858) 576-2554
www.trane.com



The YEA Pages!

YEA San Diego is for young professionals in our industry who are 35 years of age or younger. This group will focus on issues more relevant to those who are relatively new to the industry.

If you have any questions, comments, suggestions or would like to be added to the email list for future events, please let me know

Greg Horman

YEOSanDiego@gmail.com

ASHRAE San Diego YEA Chair



See

<http://www.ashraesd.org/yea.html>
for upcoming YEA events & info

We just held our Annual YEA Padre Game and Tailgate Party which was a roaring success. Not only did everyone have a great time, but it was a great game with the Padres coming back from way behind a beat the Cubbies at the very end. Loads of fun and excitement for all!

Keep an eye out for upcoming YEA events, or suggest one of your own to Greg Horman at g.horman@us-ac.com or Cindy Hyatt at cindyh@tmmechanical.com.

Also, check out the ASHRAE San Diego Poker Night Flyer at the end of this newsletter... See ya there!



5th Annual YEA Padre Game & Tailgate AT PETCO PARK



FRIDAY - AUGUST 23, 2013 AT 7:10PM PADRES VS CUBS





5th Annual YEA Padre Game & Tailgate AT PETCO PARK



FRIDAY - AUGUST 23, 2013 AT 7:10PM PADRES VS CUBS



ASHRAE's HVAC Design Training

Don't
Miss the
Last Training
Session of
2013

HVAC Design: Level I—Essentials

ASHRAE's *HVAC Design: Level I—Essentials* provides intensive, practical training for HVAC designers and others involved in the delivery of HVAC services. In three days, gain practical skills and knowledge in designing, installing and maintaining HVAC systems that can be put to immediate use. This training is aimed at:

- Graduates new to consulting practices and engineering teams
- Facility engineers with assigned HVAC responsibilities
- Experienced engineers who would benefit from a review of the basics and the new technology options to save energy
- Engineers, technicians and building operating personnel in career transition

HVAC Design: Level 1—Essentials

When: October 28–30, 2013

Where: ASHRAE Headquarters, Foundation Learning Center, Atlanta, GA

Cost: \$1,239 (ASHRAE Member: \$989)

REGISTER

BONUS!

Get a FREE copy
of *Standard
189.1-2011* and
User's Manual.

A \$200 Value!



New Faces of Engineering



Apply by October 7!

Are you a hard-working young engineer just getting started in the field? Or maybe you've already proven yourself through dedication and challenging projects. Gain recognition and encouragement to continue on your path to changing the world, apply to be ASHRAE's New Face of Engineering!

Nominees must be 30 years of age or younger as of Dec. 31, 2013, and have a degree in engineering from a recognized U.S. college or university, or from an equivalent international educational institution. Degrees in engineering technology, science, computer science and similar disciplines do not qualify, though a degree in computer engineering is acceptable.

Click here to download the application form:

<http://listman.ashrae.org/t/5661527/24477421/7225/4/>



ASHRAE SAN DIEGO POKER NIGHT

**When: September 27th, 2013
Starts at 6:00 PM**

**Where: US Air Conditioning Distributors
8717 Complex Drive
San Diego, CA 92123**

Why: Fundraiser for ASHRAE San Diego

Entrance Fee: \$40

See Attached Rules for Additional Information

Questions? hschopplein@gmail.com





TEXAS HOLD'EM POKER NIGHT

DATE: September 27, 2013
ADDRESS: Claremont Blvd / 163 Fwy
TIME: PROMPTLY AT 6:00 PM arrive at 5:30 pm
CHIPS: 500-IN CHIPS
GAME: TEXAS HOLD'EM
PAYOUTS: 50% OF PROCEEDS GO TO ASHRAE
GIFT CARD PRIZES 1st-3rd PLACE

FOOD (PIZZA) UNTIL SUPPLIES LAST. BRING YOUR OWN BEER.

THE FOLLOWING ARE GENERAL HOUSE RULES.

- NO SORE LOSERS.
- IN CASE THERE IS A MISDEAL, THAT TABLE WILL VOTE TO REDEAL OR CORRECT ERROR. MAJORITY RULES.
- NO COACHING
- NO FOLDING OUT OF TURN
- CANNOT PASS DEAL
- WHEN BETTING, MONEY IS TO STAY IN FRONT OF EACH PLAYER UNTIL BETTING IS COMPLETE FOR THAT ROUND
- ALL PLAYERS WILL BE SEATED AT RANDOM. FINAL TABLE WILL BE LAST 8 PLAYERS FROM ALL TABLES COMBINED. HOUSE RESERVES THE RIGHT TO COMBINE TABLES AT ANY TIME.

BETTING: WILL CHANGE AFTER 30 MINUTES OF PLAY. HOUSE RESERVES THE RIGHT TO CHANGE BETTING BEFORE ANY GAME STARTS TO KEEP THE GAME MOVING FORWARD.

START GAME:

The game is started with the two players to the left of the dealer posting a Small Blind and Big Blind (The values are below). Then the two pocket cards are dealt to each player. The betting begins with the player left of the Big Blind. Because the blinds are bets, not antes, players can not check in the first betting round; They must either fold, call, or raise.

SECOND ROUND:

After first round is complete, burn top card and three cards are dealt face up on the table (the top). The cards are common to all players. Betting starts with the first active player to the left of the dealer.

THIRD ROUND:

After second round is complete, burn top card and the fourth communal card is dealt face up on table (the turn). Betting starts with the first active player to the left of the dealer.

FOURTH ROUND:

After third round is complete, burn top card and the final card is dealt face up on table (the river). Betting starts with the first active player to the left of the dealer.

Players use their two pocket cards and the five communal cards to create the best five-card hand possible, with the winner receiving the pot. If two or more players have the same winning hand, the pot is equally between them.

BETTING WILL CHANGE EVERY 30 MINUTES OF PLAYING TIME. THE FOLLOWING ARE BETTING OF THE SMALL AND BIG BLIND. ALL SEQUENTIAL BETTING FOLLOWING THE SMALL AND BIG IS UNLIMITED.

SMALL BLIND	10	20	30	50	100	150	200	250	300	600	1200	2400
BIG BLIND	20	40	60	100	200	250	400	500	600	1200	2400	5000

LET'S HAVE A GOOD TOURNAMENT.....GOOD LUCK!!!